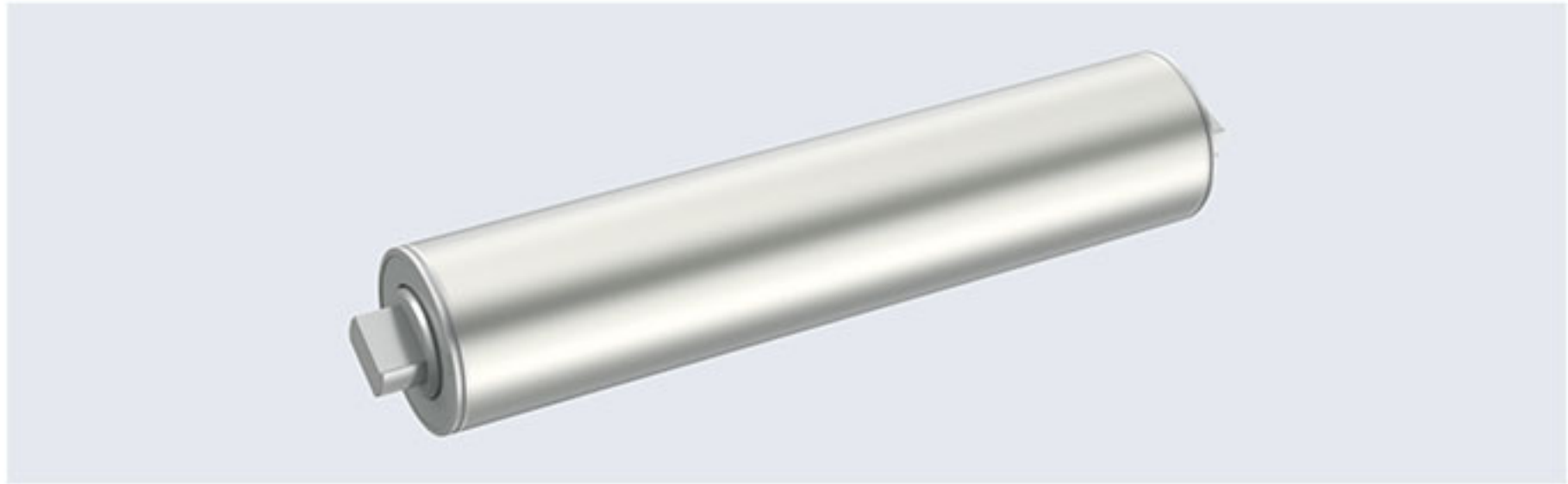


BLDG76 电动滚筒 BLDG76 Drum Motor



■ 产品概述 Product Description

此款电动滚筒式空间极其有限的情况下，仍可以安装得到要求的力矩。采用高合金钢精磨齿轮和行星传动结构为主体设计，具有性能可靠、免维护、免加油、适合较小的安装空间等诸多优点。适用于多个领域：

This type of drum motor can be installed in limited space and meet the torque requirement. Using alloy steel grinded gears and planetary transmission structure, it is reliable, free of maintenance and oil-renewing, space-saving. It can be use in many fields:

- 超市收银台 Supermarket cashier
- 包装机械 Packaging machinery
- 皮带输送线 Belt conveyor line

■ BLDG76 电动滚筒特征 BLDG76 Characteristics Of Drum Motor

● 筒体 Drum Shell

• 标准筒体为低碳钢材质 • 食品级筒体为 304 不锈钢 • 标准筒体表面加工有防滑滚花 • 齿轮传动 • 高合金钢精磨齿轮，确保传动时低噪音 • 行星齿轮传动

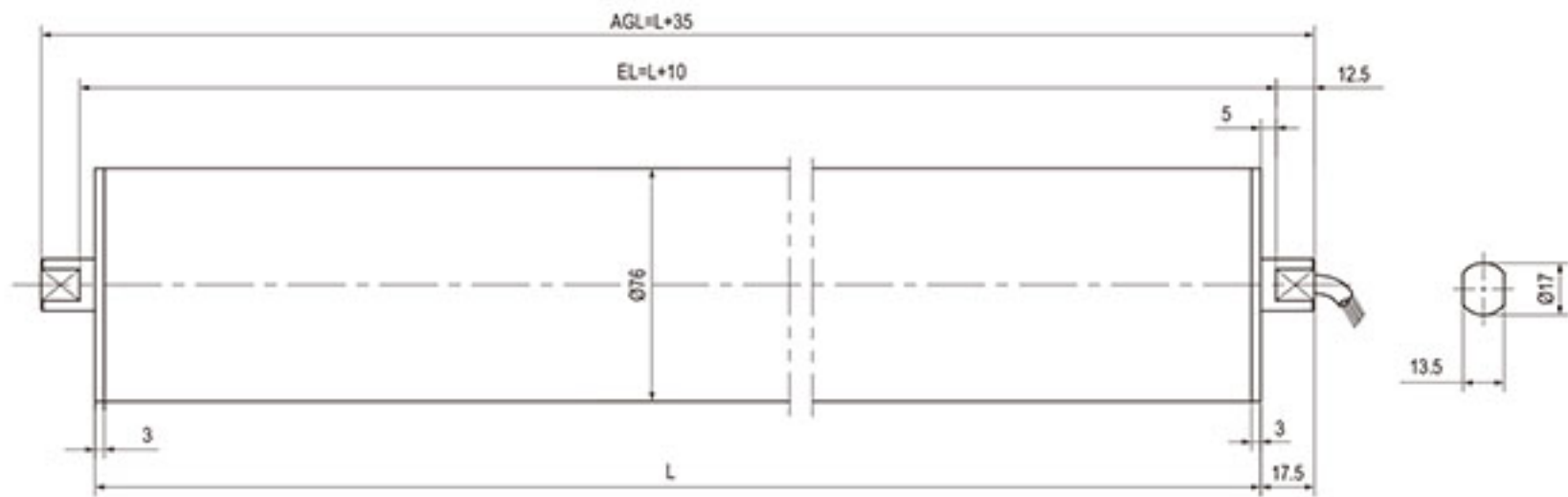
• Material of standard drum shell is mild steel • Food garde shell is 304 stainless steel • Standard cylinder rolling mill gear slip flower-gear • Gear drive • High alloy steel precision, ensures low noise transmission • Planetary gear transmission

■ 电机基本特性 Basic Characteristics Of Motor

● 外径 76 滚筒 (DC 电源时适用于 24VDC/36VDC/48VDC) External diameter 76 drum motor (DC Power Supply When Applied To 24VDC/36VDC/48VDC)

项目 Item	单位 Units	参数 Parameters
额定功率 (连续) Rated power (continuous)	W	120
额定转速 Rated speed	r/min	3000
额定转矩 Rated torque	N.m	0.382
瞬时最大转矩 Instantaneous maximum torque	N.m	1.58
速度控制范围 Speed control range	RPM	200~3000
速率变化率 Speed control range	对负载 On load	± 1.0% 以下：条件 0~ 额定转矩、额定转速、额定电压、常温 Below ± 1%: condition 0~ rated torque, rated speed, rated voltage, room temperature
	对电压 On voltage	± 1.0% 以下：条件额定电压 ± 10%、额定转速、额定负载、常温 Below ± 1%: condition rated voltage ± 10%, rated speed, rated load, room temperature
	对温度 On temperature	± 1.0% 以下：条件使用环境温度 0~+40°C 额定转速、额定负载、额定电压 Below ± 1%: conditions of ambient temperature 0~+40°C rated voltage, rated load and rated speed
电源输入 Power input	额定电压 Rated voltage	V 24VDC(可选 Optional 36VDC/48VDC)
	电压容许范围 Voltage tolerance range	10%
	额定输入电流 Rated input current	A 7.14
	瞬时最大输入电流 Instantaneous maximum input current	A 21.42

■ BLDG76 尺寸图 BLDG76 Outline Dimensions



■ BLDG76 机械参数 BLDG76 Mechanical Parameters

额定功率 P Rated Power P W	齿轮箱级数 Gear Box Series	减速比 i Reduction Ratio i	额定转速 n Rated Speed n RPM	额定线速度 V Rated Speed V m/min	额定扭矩 T Rated Torque T N.m	牵引力 F Traction F N	最小筒长 L Min Tube Length L mm
120	1	3	1000.00	188	1.07	28	290
		5	600.00	113	1.78	47	290
		8	375.00	71	2.84	75	290
	2	12	250.00	47	3.94	104	315
		16	188.00	35	5.26	138	315
		20	150.00	28	6.57	173	315
		25	120.00	23	8.21	216	315
		32	94.00	18	10.51	277	315
		40	75.00	14	13.14	346	315

• 我们也提供其他线速度 V 要求和更短筒长 L 的特殊定制滚筒，请联系我们获取详细信息。